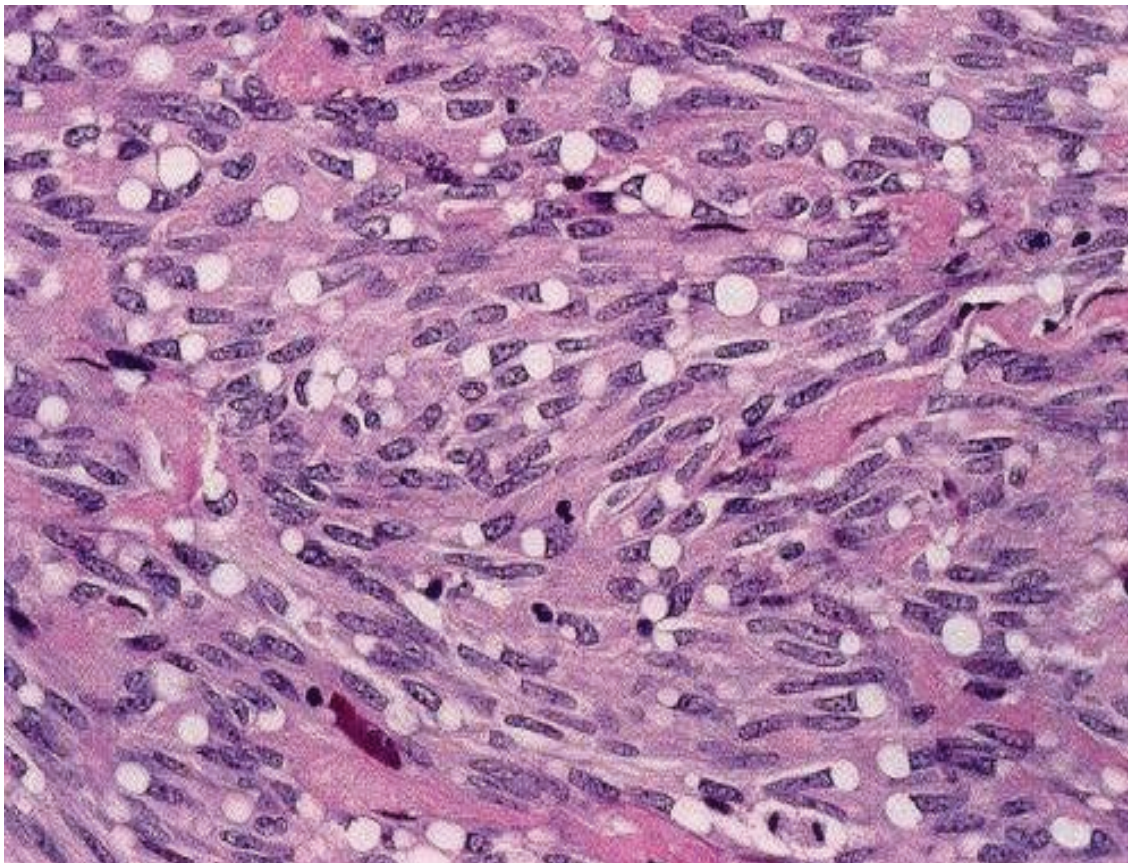


*Klaikaw N***Case 1**

A 60 yrs old male, developed upper GI bleeding with coffee ground contents. He has no abdominal pain. Gastroscopy was performed and seen submucosal mass >10 cm. The pathology revealed pack of spindle cell with paranuclear vacuoles.



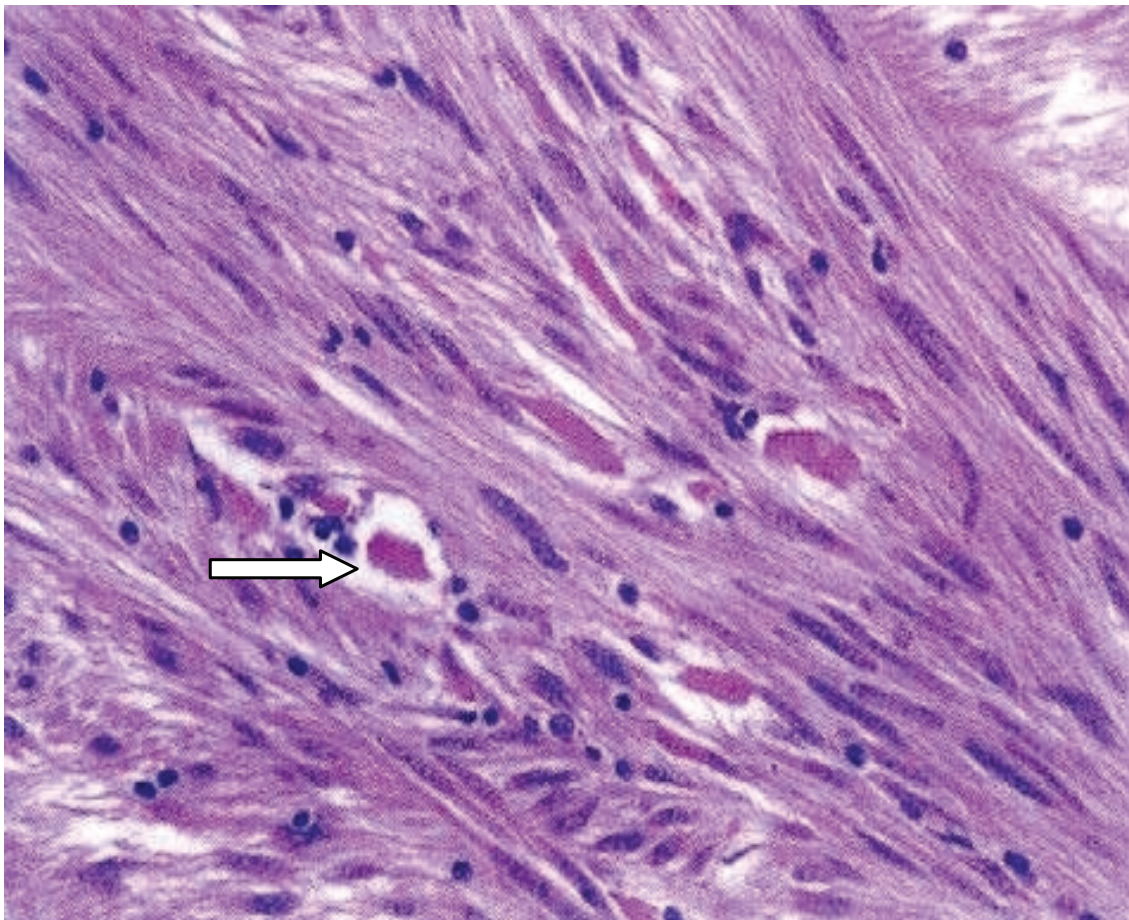
**What is the most likely diagnosis ?**

(Answer see page 60)

Klaikeaw N

## Case 2

A 50 years old female presented with early satiety and palpable abdominal mass at epigastrium for 6 months. CT scan showed large 8 cm mass with central necrosis involving fourth part duodenum. Pathology revealed spindle cell tumor with scatter skenoid fiber (eosinophilic collagenous fiber).



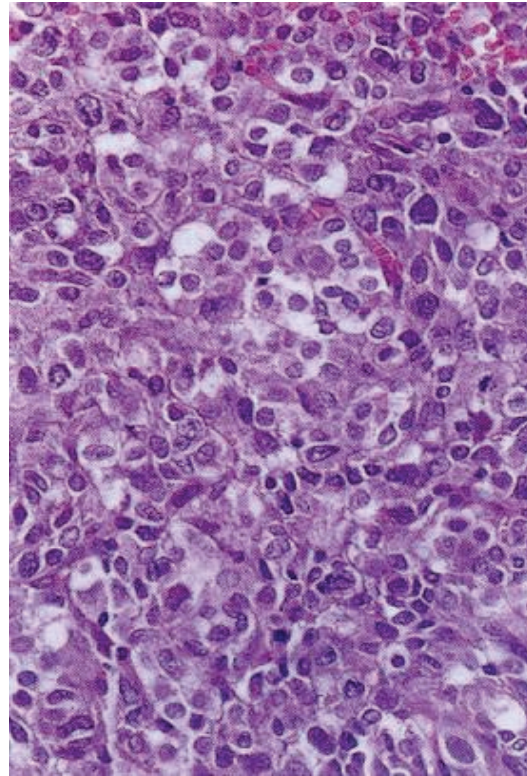
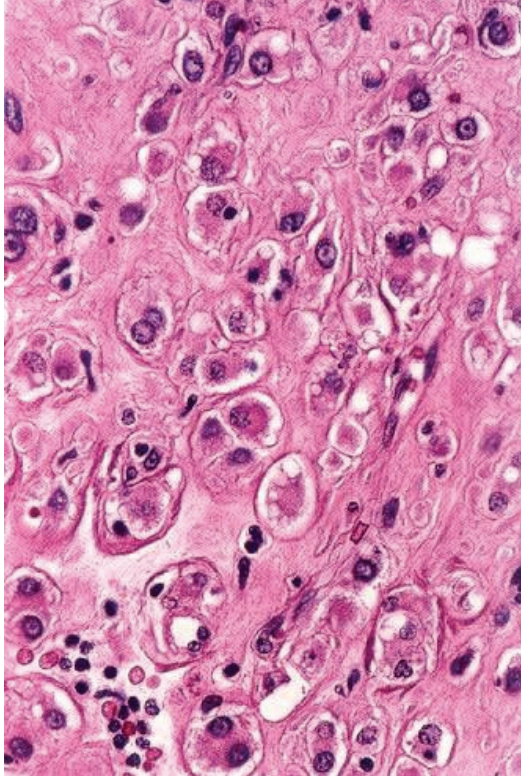
**What is the most likely diagnosis ?**

(Answer see page 60)



**Case 3**

A 60 years old male presented with dyspeptic symptom and abdominal mass. Gastroscopy was performed and seen submucosal mass 6 cm. The pathology revealed epithelioid tumor cells with positive staining for CD117.



**What is the most likely diagnosis ?**

(Answer see page 60)

**Answer for patho corner**

Case 1 = Gastric GIST

Case 2 = Small intestinal GIST

Case 3 = Epithelioid GIST

\*GIST = Gastrointestinal Stromal Tumor