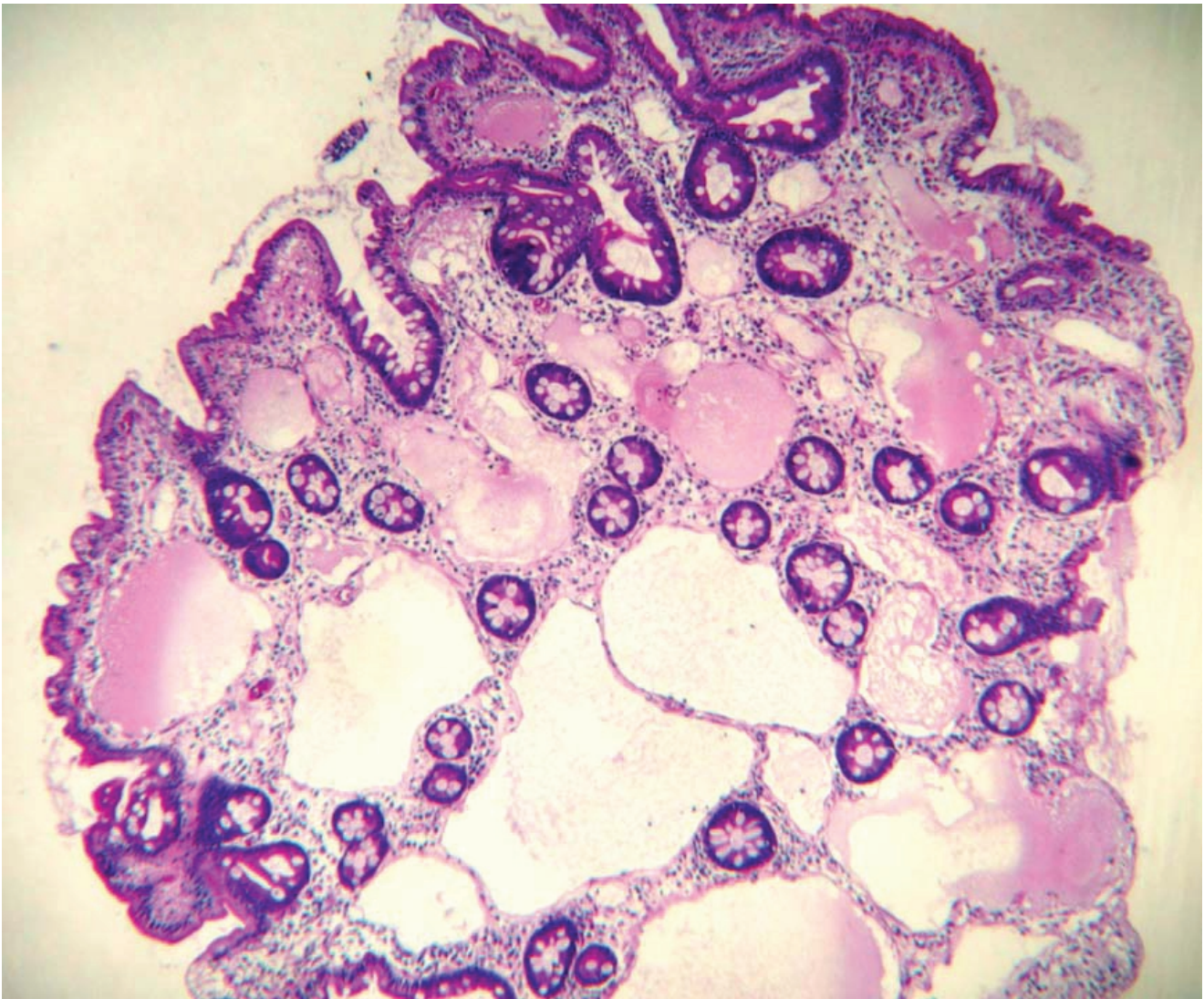


*Klaikaew N***Case 1**

A 35 year-old female, presented with chronic watery diarrhea for 6 months. She had 3 kg weight reduction with both feet edema. Gastroscopy was done and showed diffuse white plaque in duodenum. The pathology reported diffusely dilatation of lymphatic channels containing pale eosinophilic fluid and lining with endothelial cells.



What is the most likely diagnosis ?

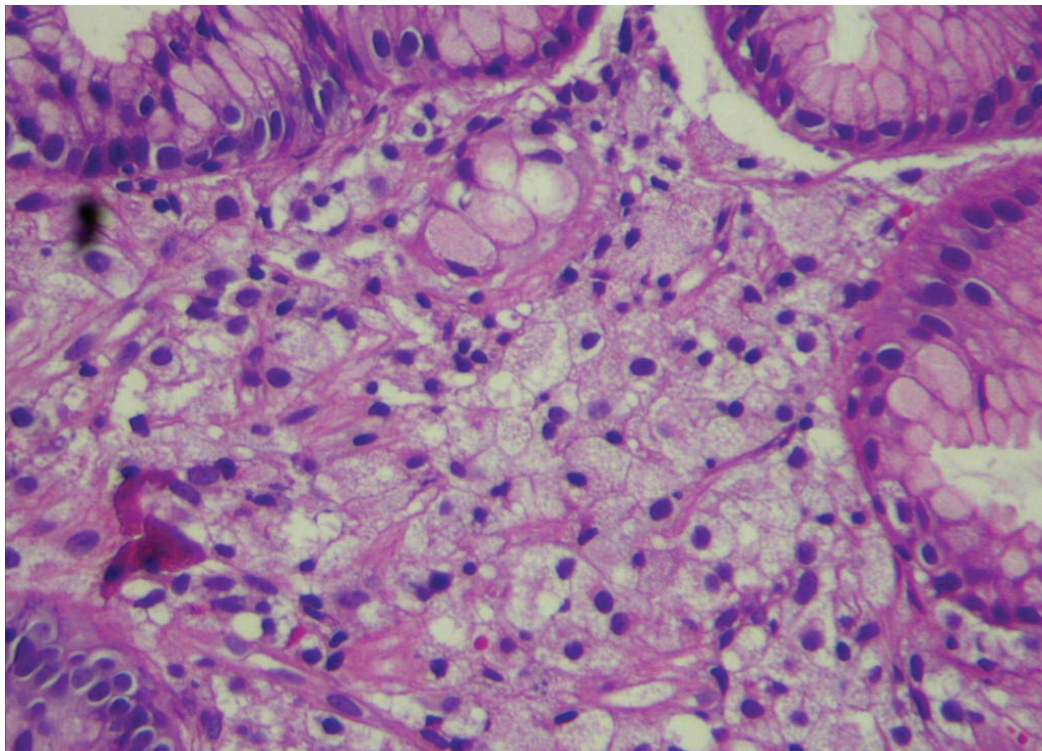
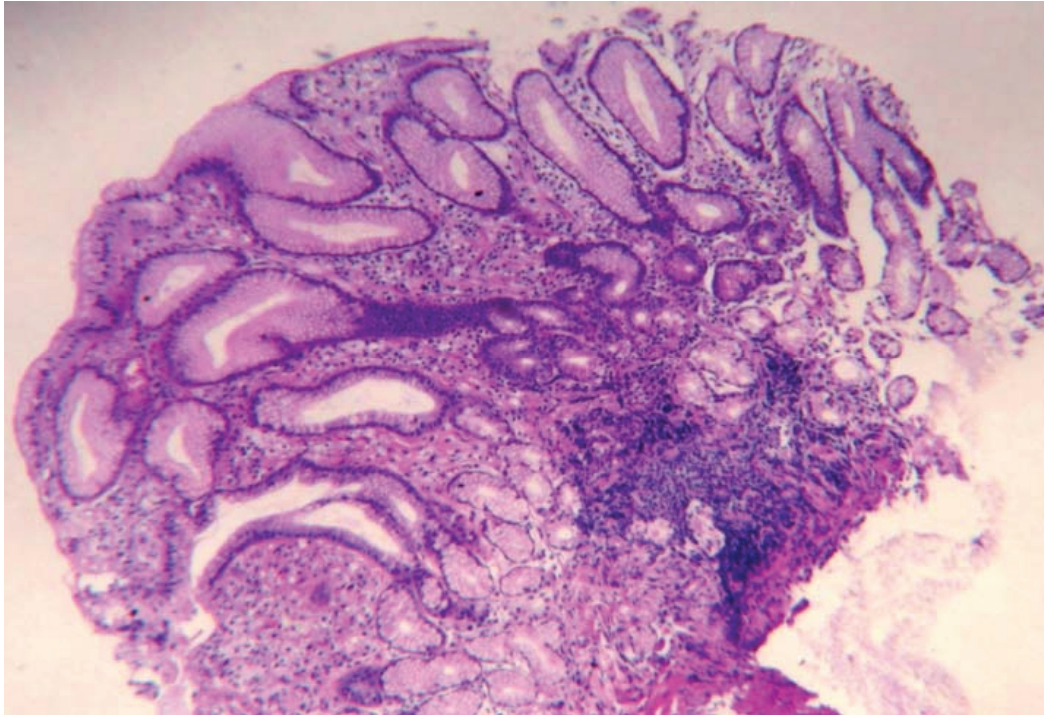
(Answer see page 170)

Address for Correspondence: Naruemon Klaikaew, M.D., Department of Pathology, Faculty of Medicine, Chulalongkorn University, Bangkok 10330, Thailand.

Klaikeaw N

Case 2

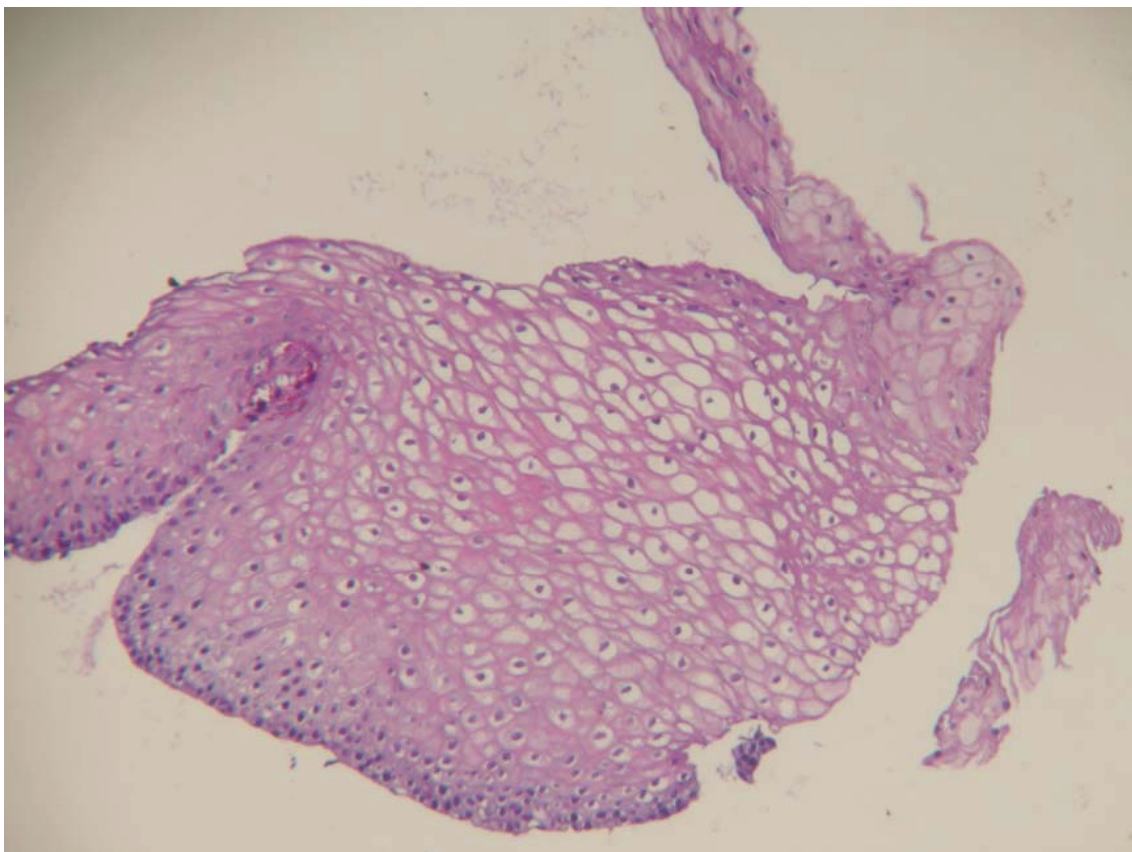
A 30 year-old man, complained chronic dyspepsia. He had no weight loss. He requested for gastroscopy as well due to history of gastric cancer of his mother. EGD was performed and showed a pale yellow, submucosal patch in gastric antrum. The pathology reported gastric mucosa with patchy infiltration of foamy histiocytes possess bland looking nuclei and foamy cytoplasm.



What is the most likely diagnosis ?
(Answer see page 170)

Case 3

A 60 years old male patient, presented with dysphagia for 2 months without weight loss. EGD was done and showed multiple white nodules size 0.2-0.3 cm along esophagus. The biopsy was performed and pathology showed enlarged epithelial cells with clear cytoplasm appearing as nodular lesion.



What is the most likely diagnosis ?
(Answer see page 170)

Answer for patho corner

- Case 1 = Lymphangiectasia
- Case 2 = Gastric Xanthelasma
- Case 3 = Glycogen Acanthosis